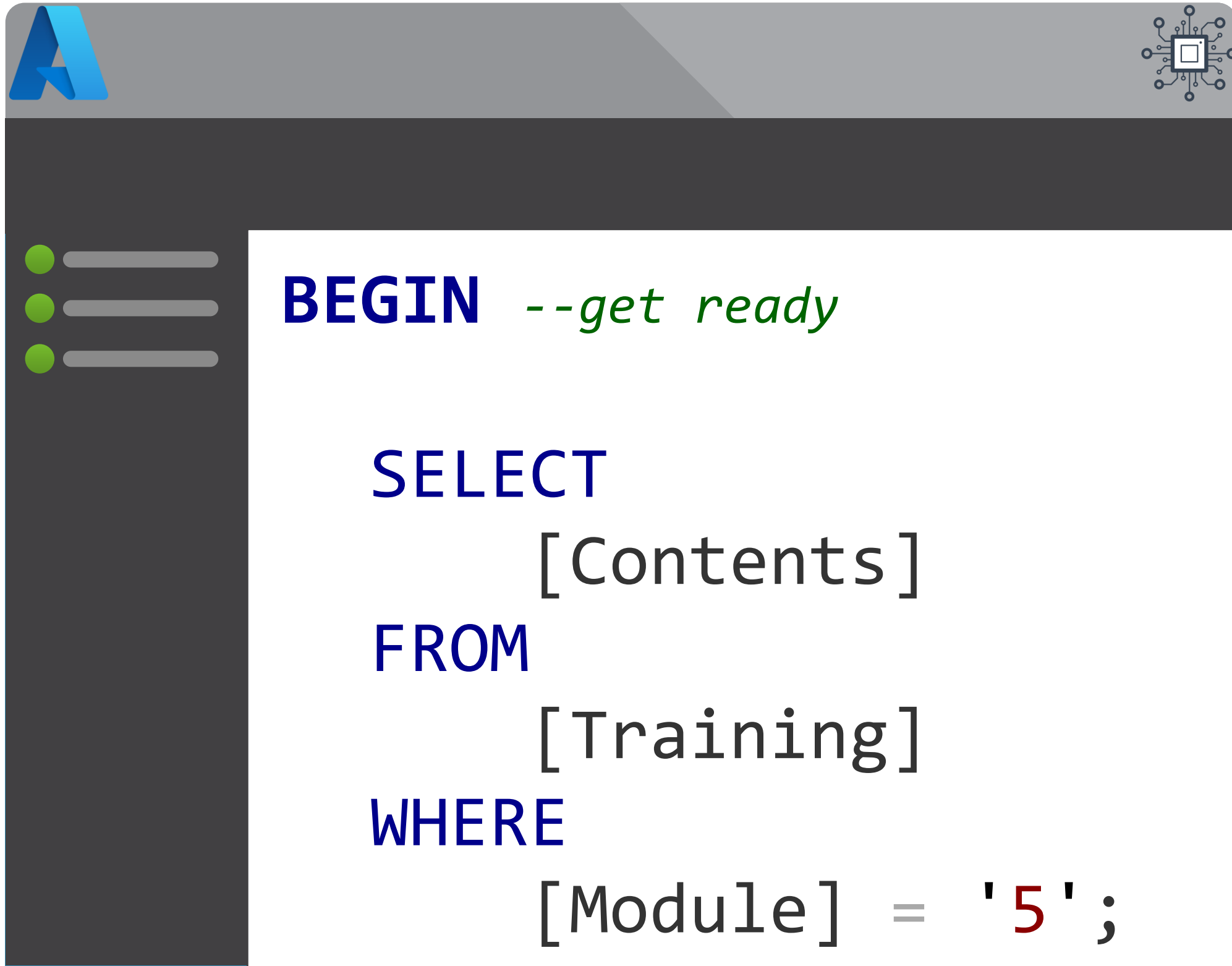


# Module 5

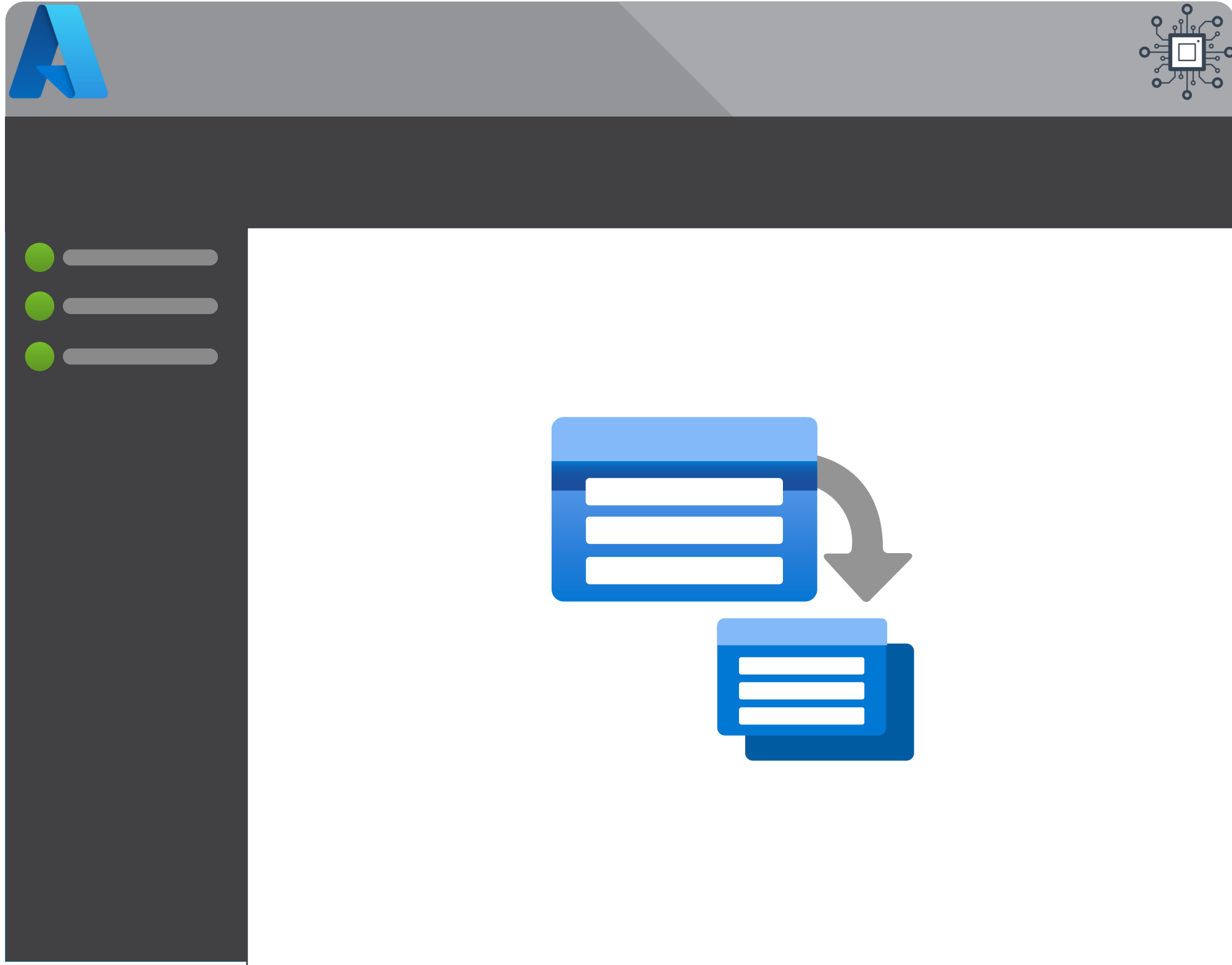
## Pipeline Extensibility



- Azure Batch Service
  - Tasks
  - Compute Pools
  - Scaling
- Pipeline Custom Activities
- Azure Management API
- Azure Functions

# Module 6

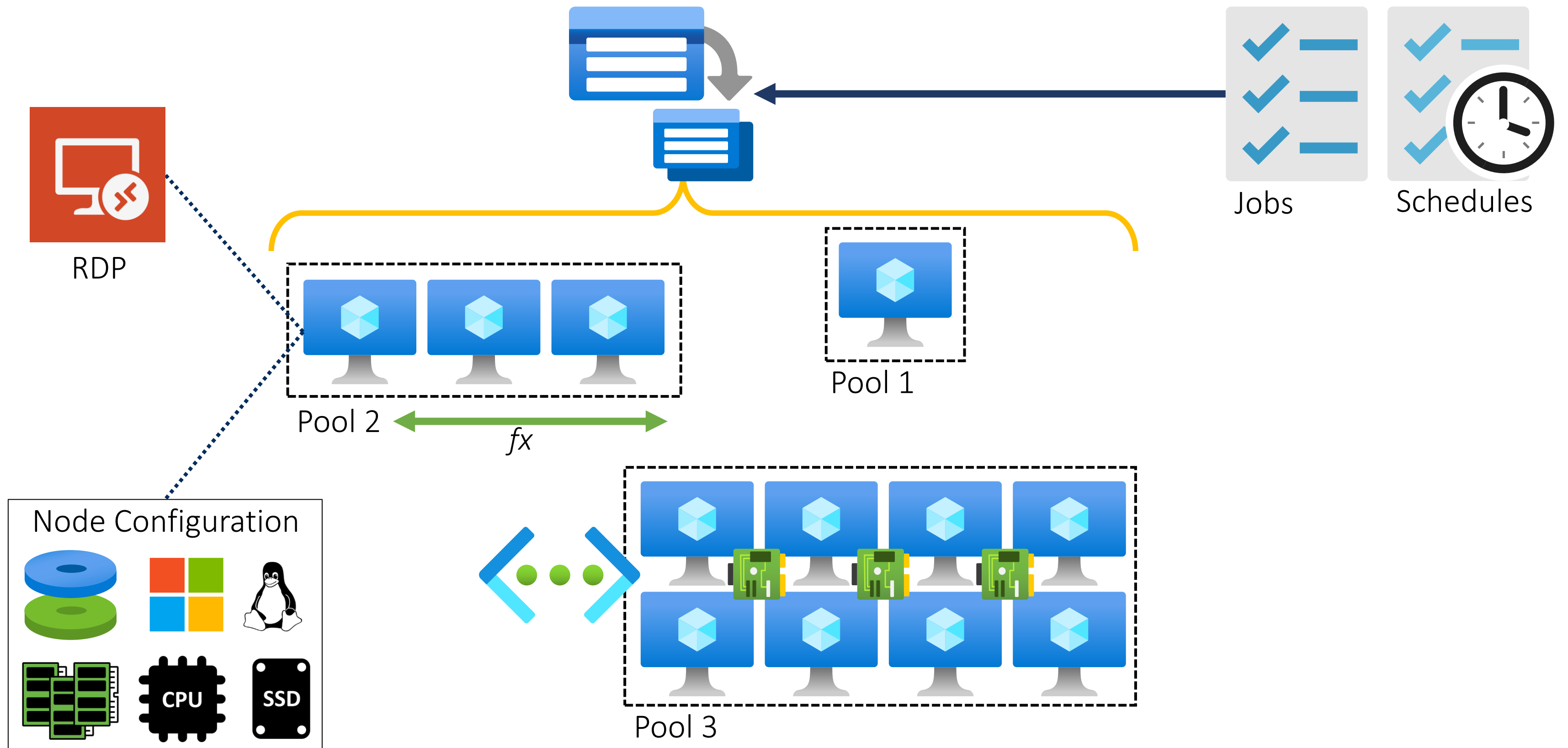
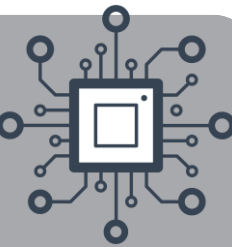
## Pipeline Extensibility



- Azure Batch Service
  - Tasks
  - Compute Pools
  - Scaling
- Pipeline Custom Activities
- Azure Management API
- Azure Functions

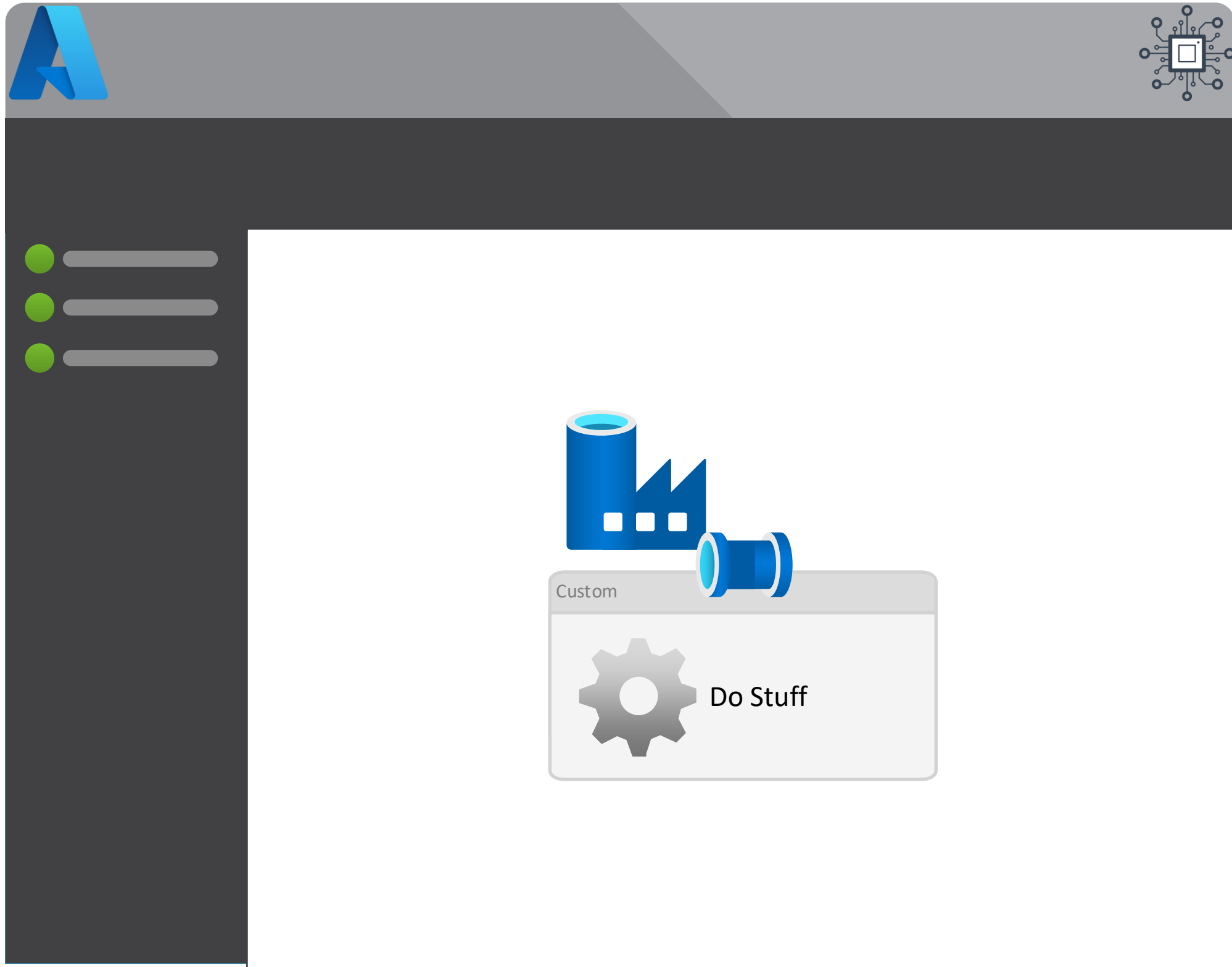


# Azure Batch Service



# Module 6

## Pipeline Extensibility



- Azure Batch Service
  - Tasks
  - Compute Pools
  - Scaling
- Pipeline Custom Activities



# Custom

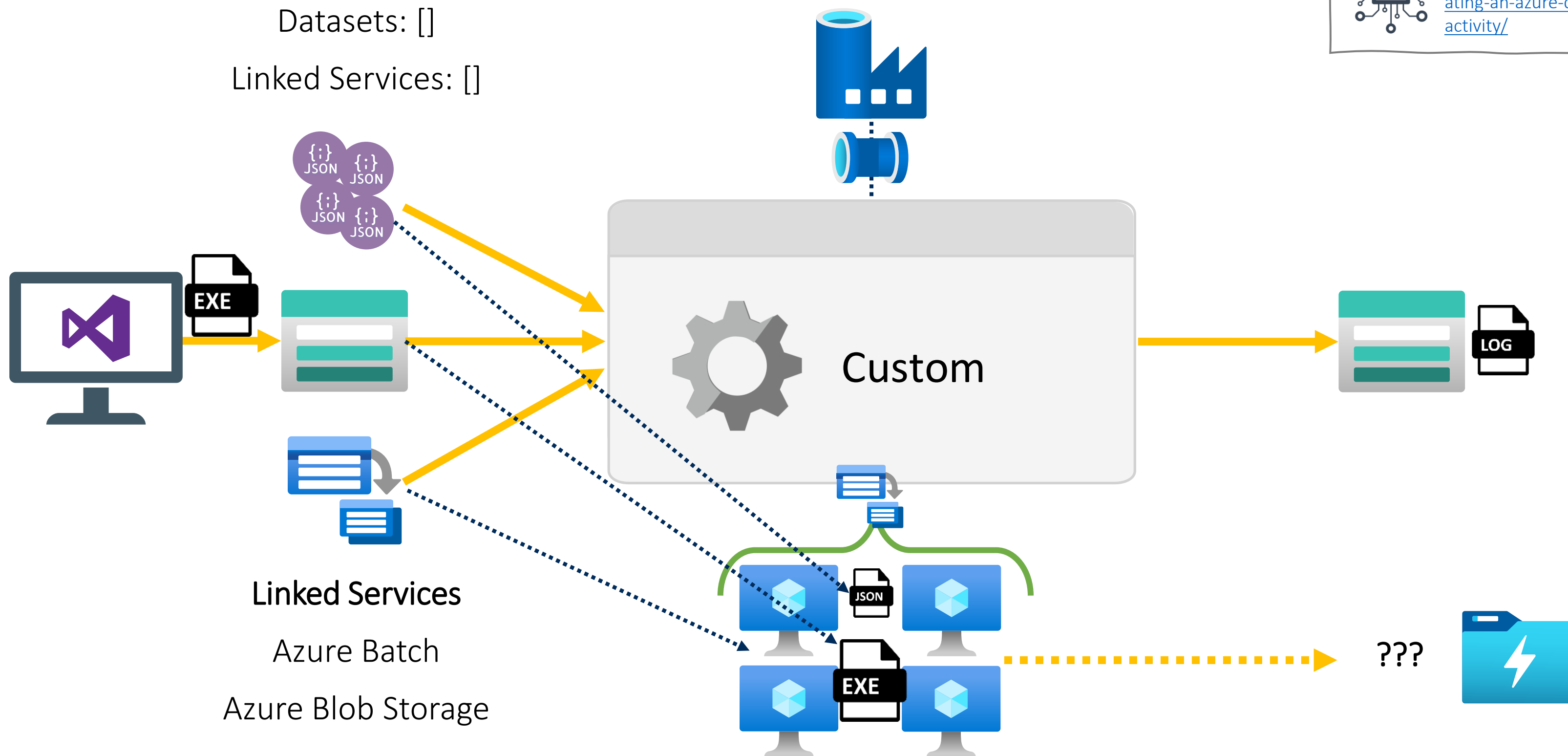


Extend Data Factory with Dedicated Scalable Compute and Custom Code

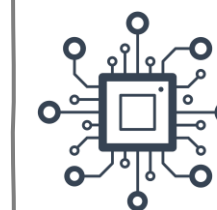
## References Objects

Datasets: []

Linked Services: []



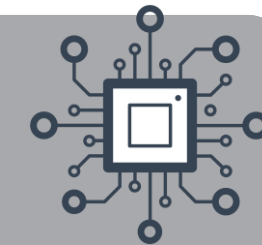
## Creating a Custom Activity



<https://mrpaulandrew.com/2018/11/12/creating-an-azure-data-factory-v2-custom-activity/>



# Custom

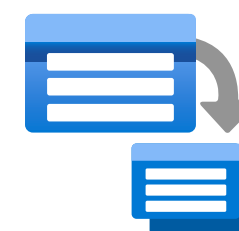
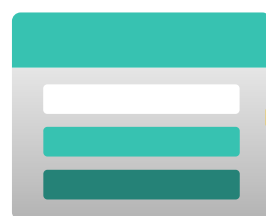
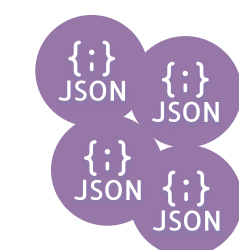


Extend Data Factory with Dedicated Scalable Compute and Custom Code

## References Objects

Datasets: []

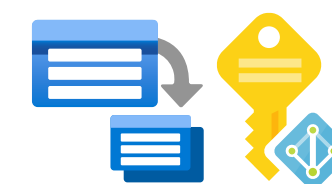
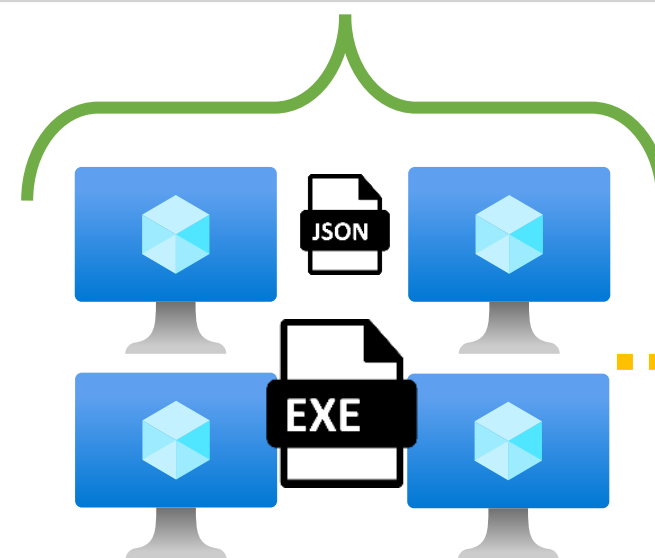
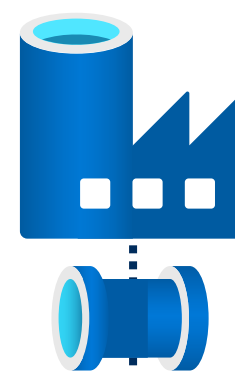
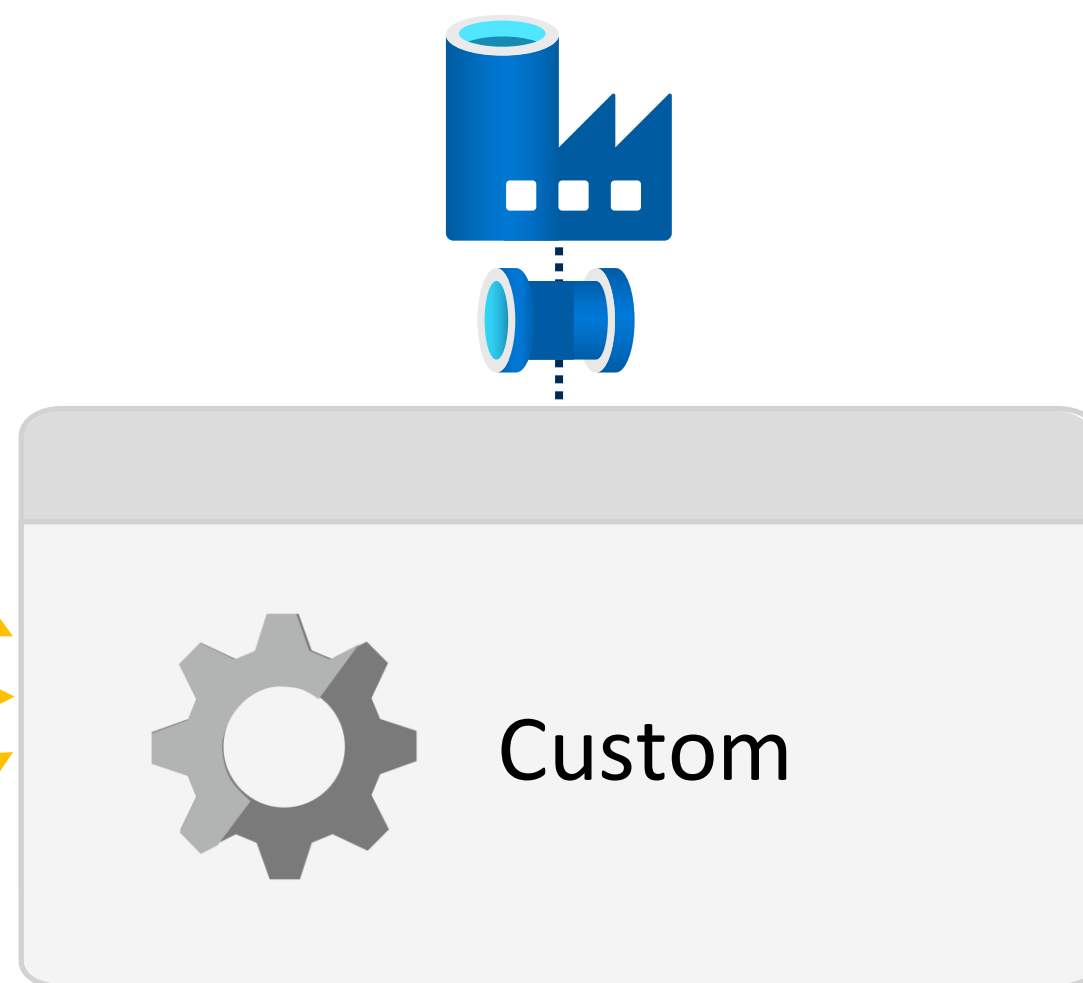
Linked Services: []



## Linked Services

Azure Batch

Azure Blob Storage



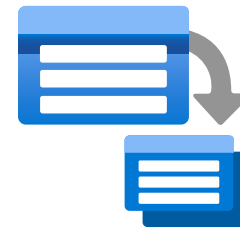
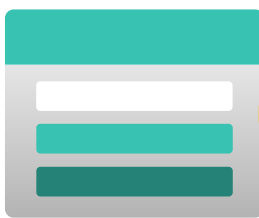
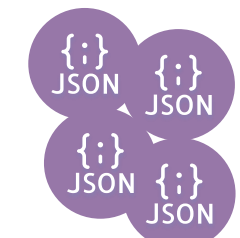
???



References Objects

Datasets: []

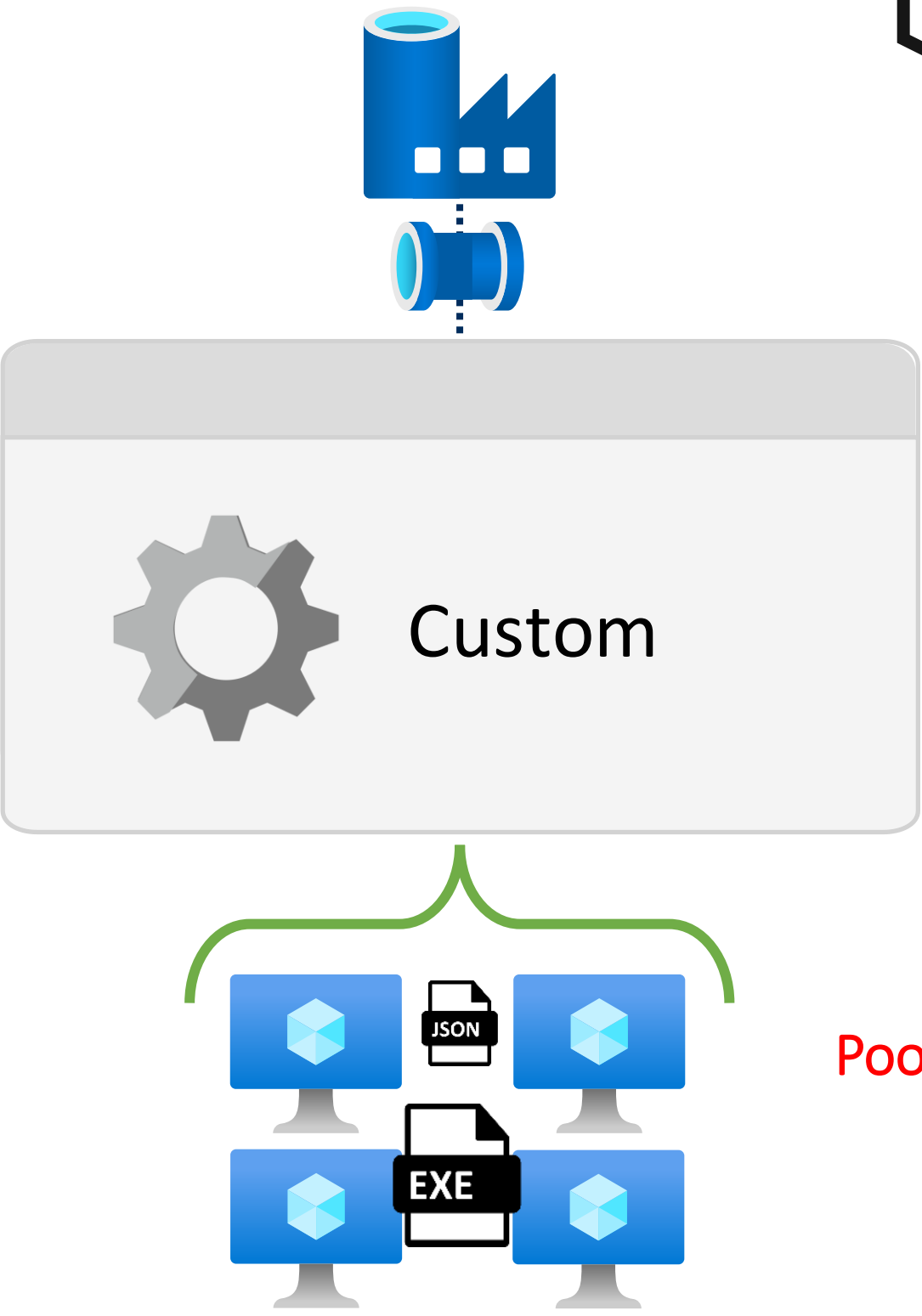
Linked Services: []



Linked Services

Azure Batch

Azure Blob Storage



New linked service

 Azure Batch [Learn more](#)

Name \*

Description

Connect via integration runtime \* 

Authentication method \*

Managed identity name: **TrainingFactoryDev**  
Managed identity object ID: **f818bfb8-5602-4e49-9bd5-81f3855cc81f**  
Grant Data Factory service managed identity access to your Azure Batch.

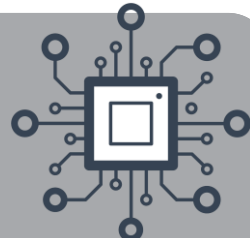
Account name \*

Batch URL \*

Pool name \*

Storage linked service name \*

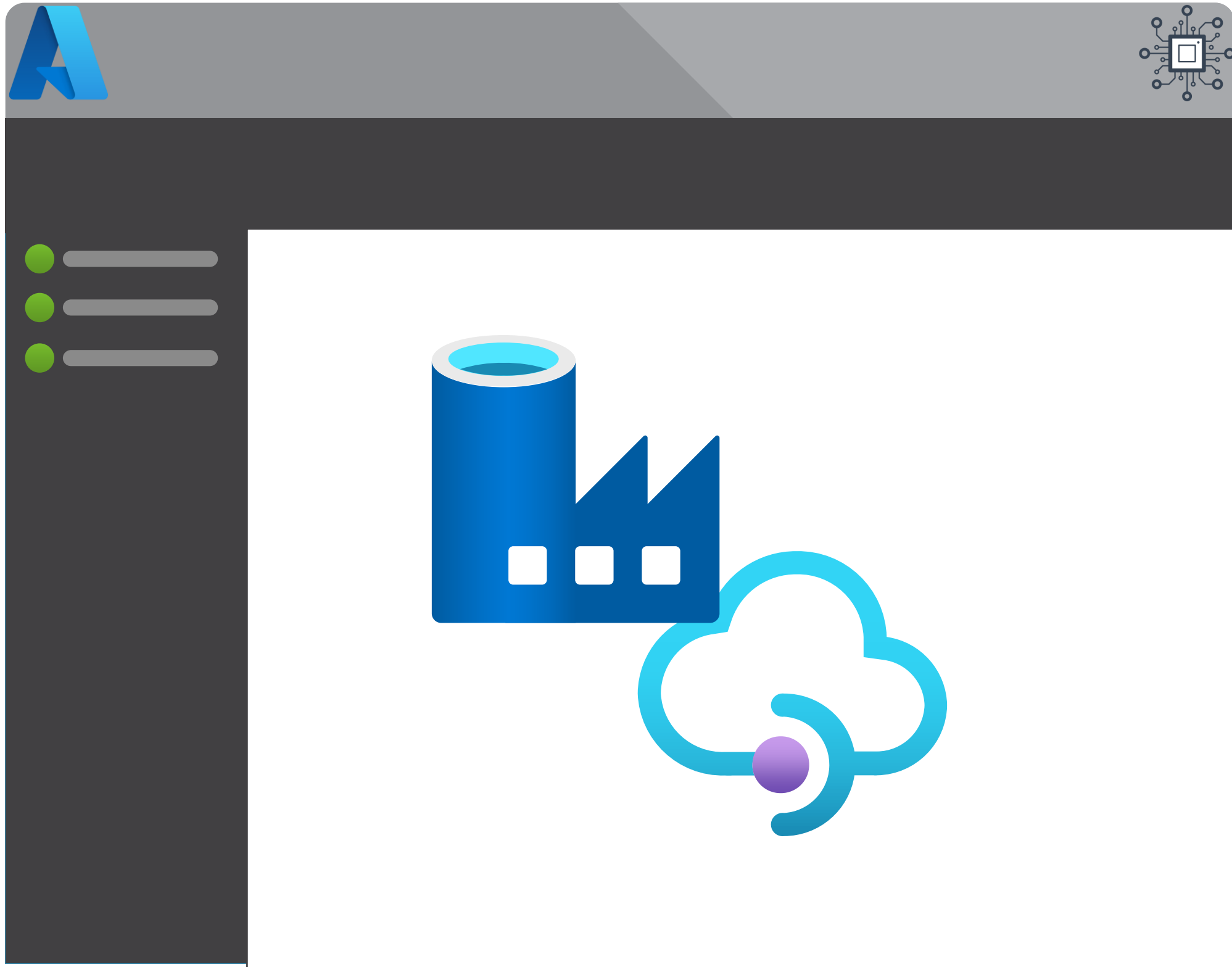
Pool ID





# Module 5

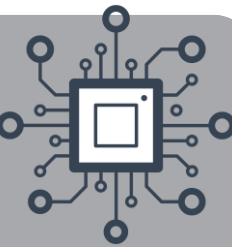
## Pipeline Extensibility



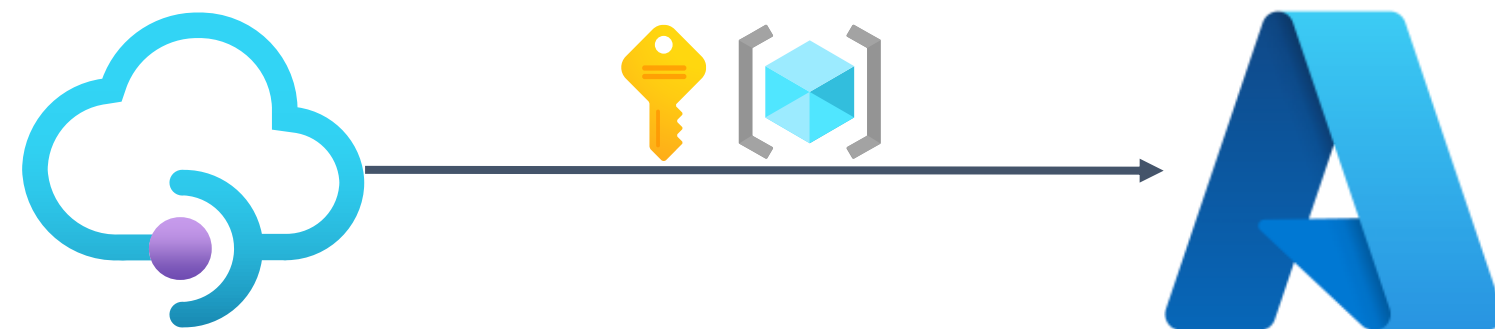
- Azure Batch Service
  - Tasks
  - Compute Pools
  - Scaling
- Pipeline Custom Activities
- Azure Management API
- Azure Functions



# Management API's



## Azure Management API



Make REST calls to  
interface with your  
Azure Resources



## Azure API Manager

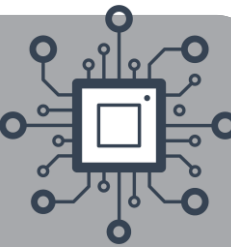


Build your own REST  
interface as an  
Azure Resource

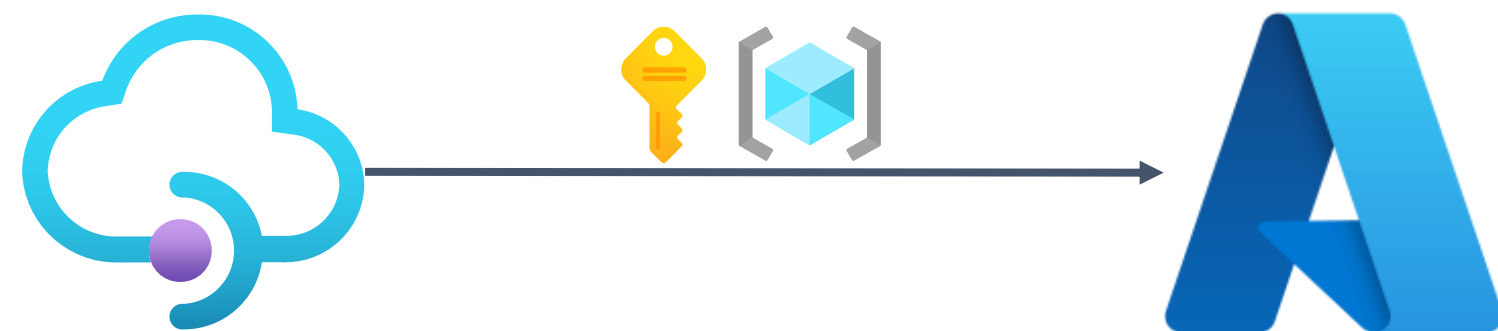




# Management API's



## Azure Management API



Make REST calls to  
interface with your  
Azure Resources

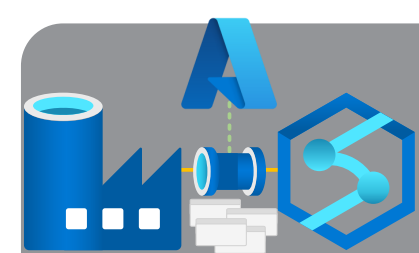
REST

## Azure API Manager

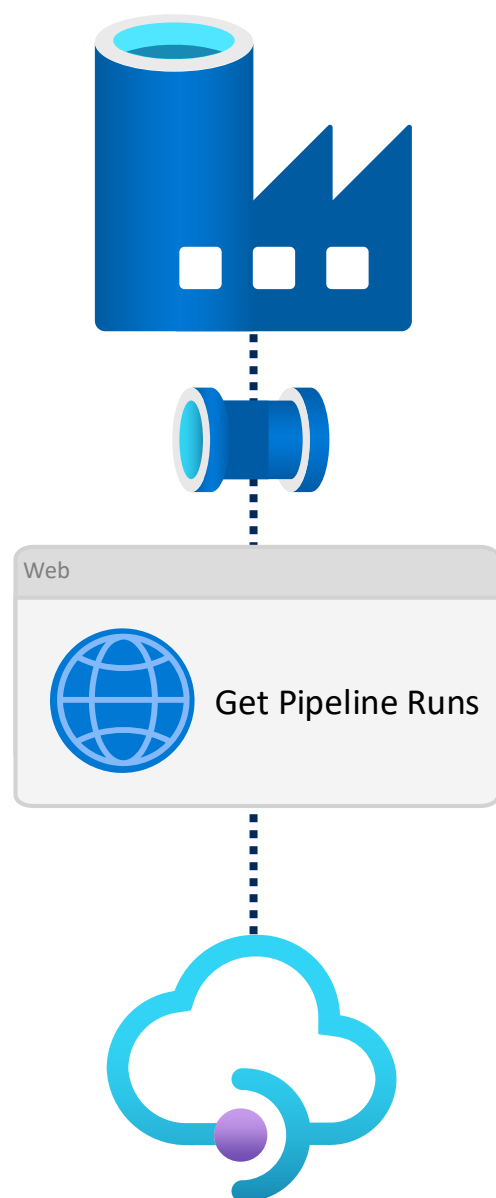
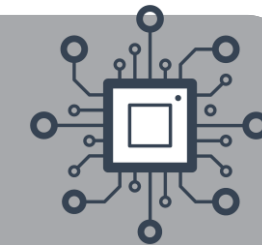


Build your own REST  
interface as an  
Azure Resource

REST



# Orchestrate Everything



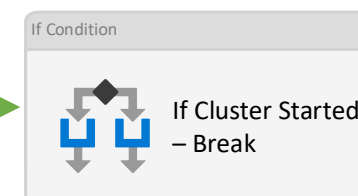
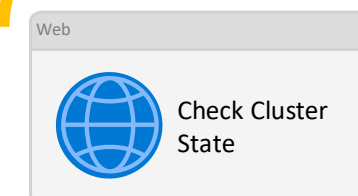
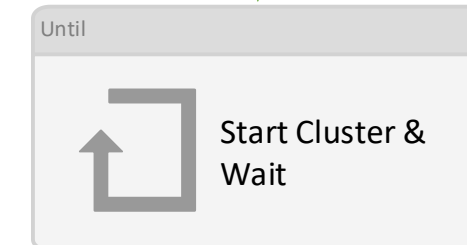
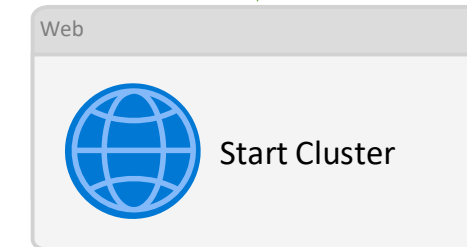
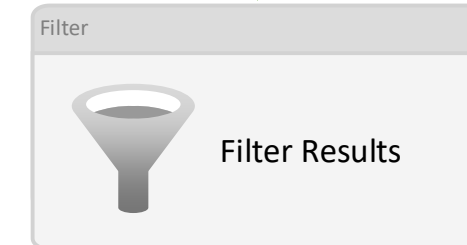
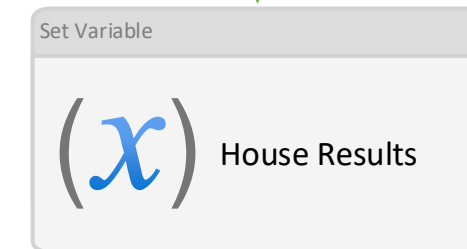
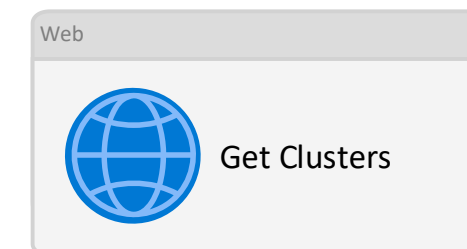
URL [https://management.azure.com/subscriptions/  
@{variables\('SubscriptionId'\)}/  
resourceGroups/  
@{variables\('ResourceGroupName'\)}/  
providers/  
Microsoft.DataFactory/  
factories/  
@{pipeline\(\).DataFactory}/  
queryPipelineRuns?  
api-version=2018-06-01](https://management.azure.com/subscriptions/@{variables('SubscriptionId')}/resourceGroups/@{variables('ResourceGroupName')}/providers/Microsoft.DataFactory/factories/@{pipeline().DataFactory}/queryPipelineRuns?api-version=2018-06-01)

Body {  
 "lastUpdatedAfter": "@{addDays(utcnow(),int(variables('QueryRunDays'))})",  
 "lastUpdatedBefore": "@{utcnow()}",  
 "filters": [  
 {  
 "operand": "PipelineName",  
 "operator": "Equals",  
 "values": [  
 "@{pipeline().parameters.PipelineName}"  
 ]  
 }  
 ]  
}

Auth <https://management.core.windows.net>

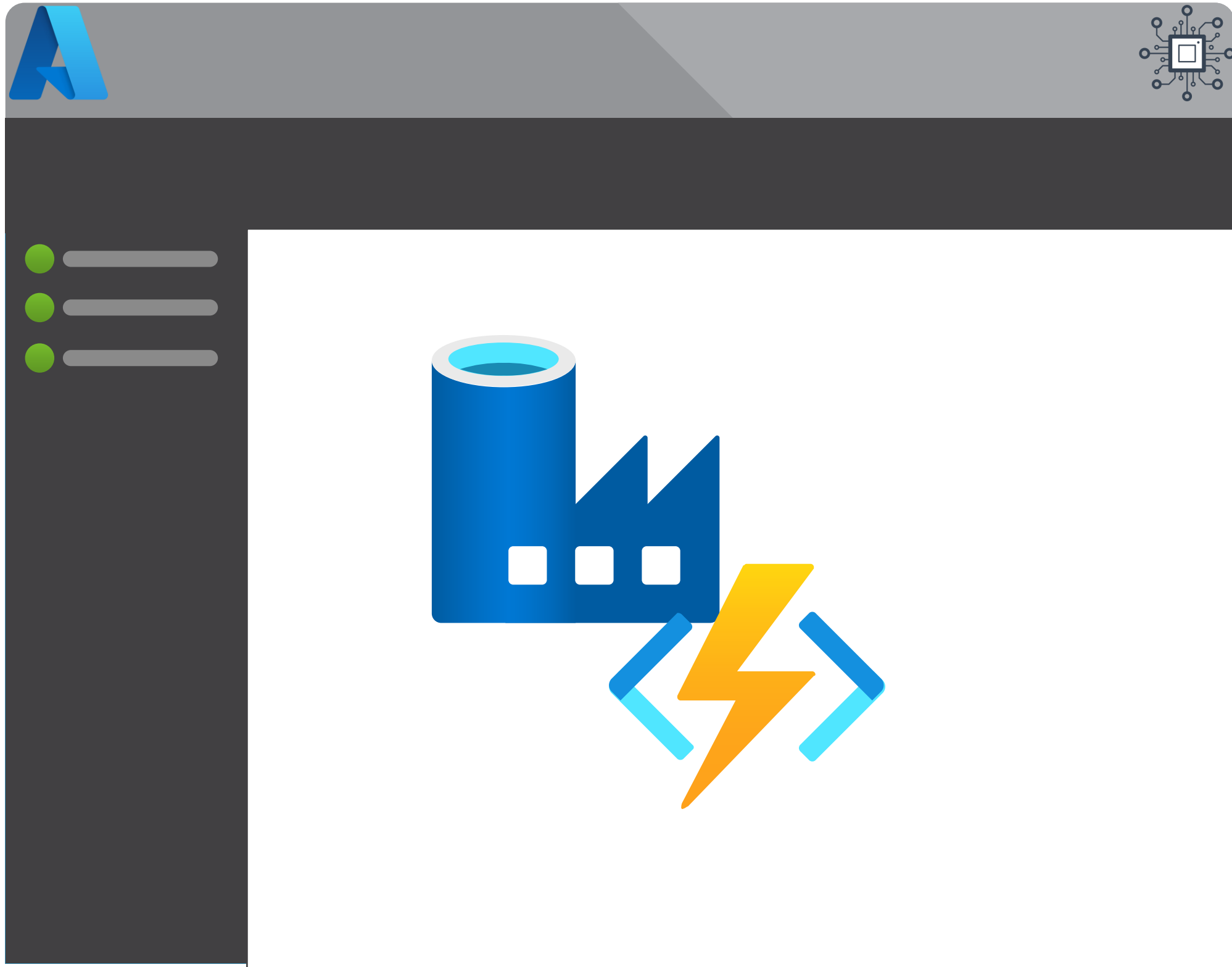


Managed Identity



# Module 5

## Pipeline Extensibility



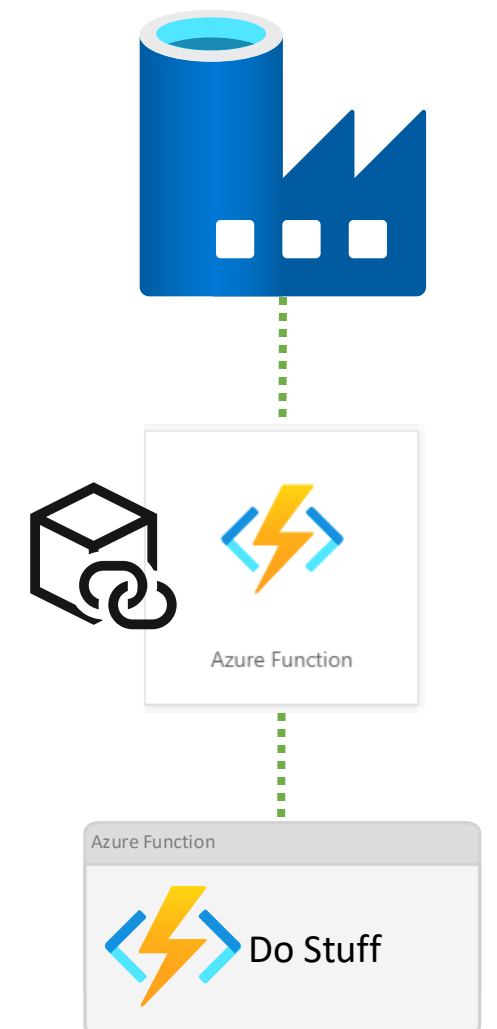
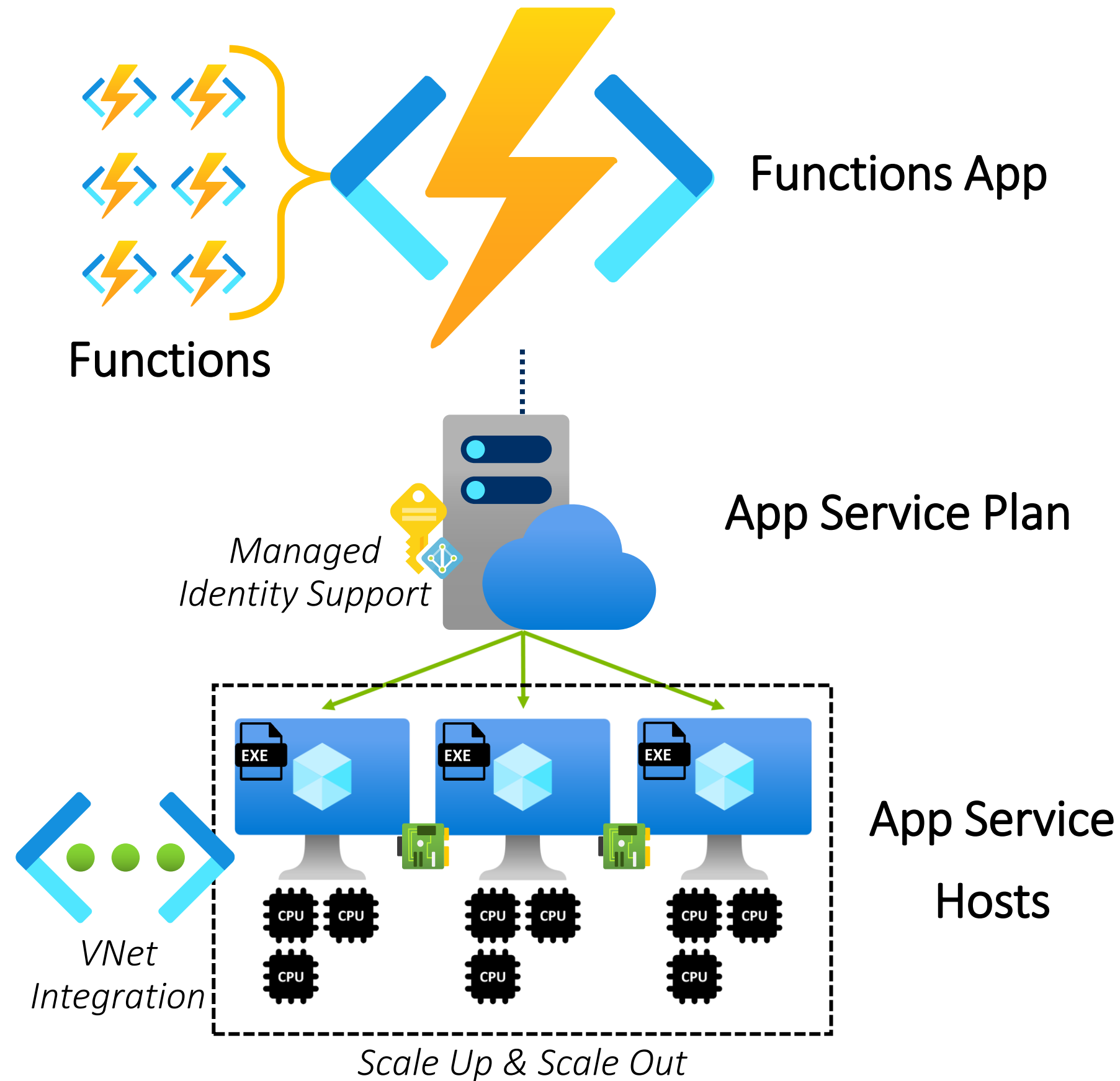
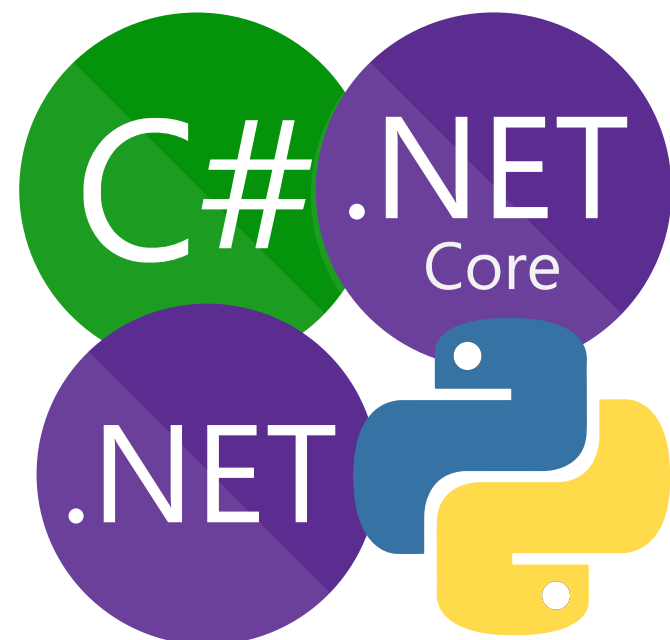
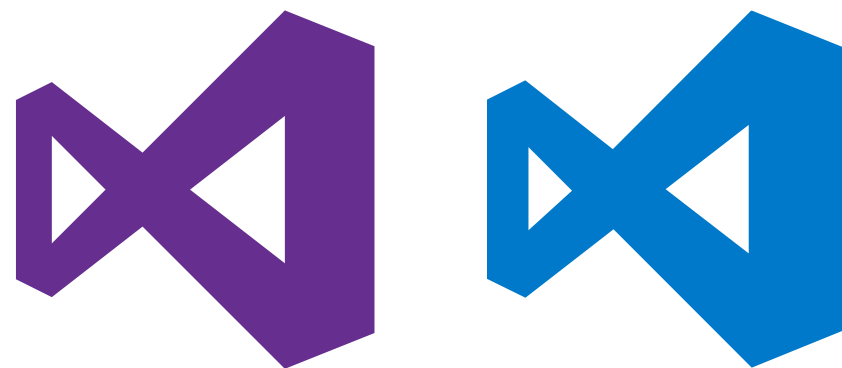
- Azure Batch Service
  - Tasks
  - Compute Pools
  - Scaling
- Pipeline Custom Activities
- Azure Management API
- Azure Functions

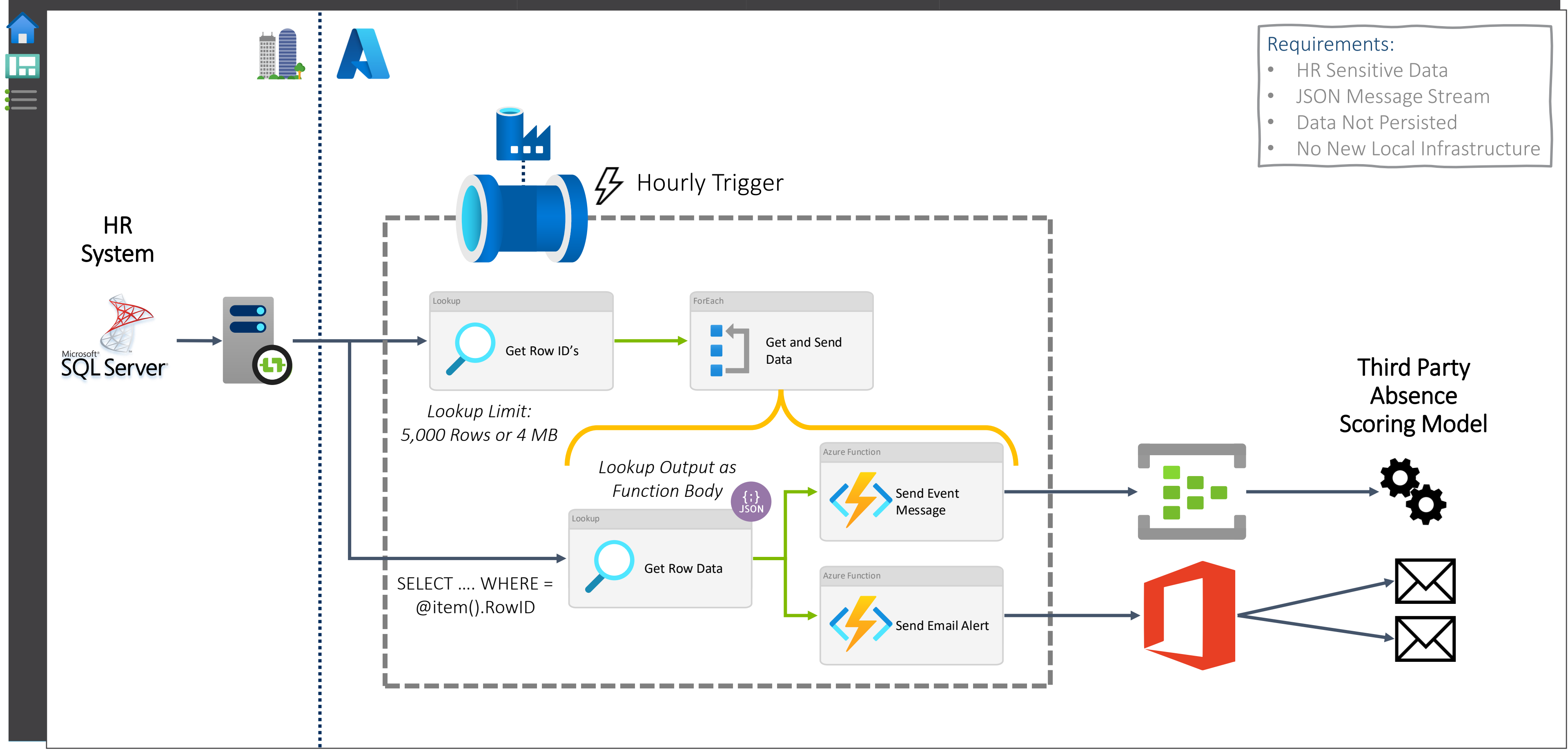


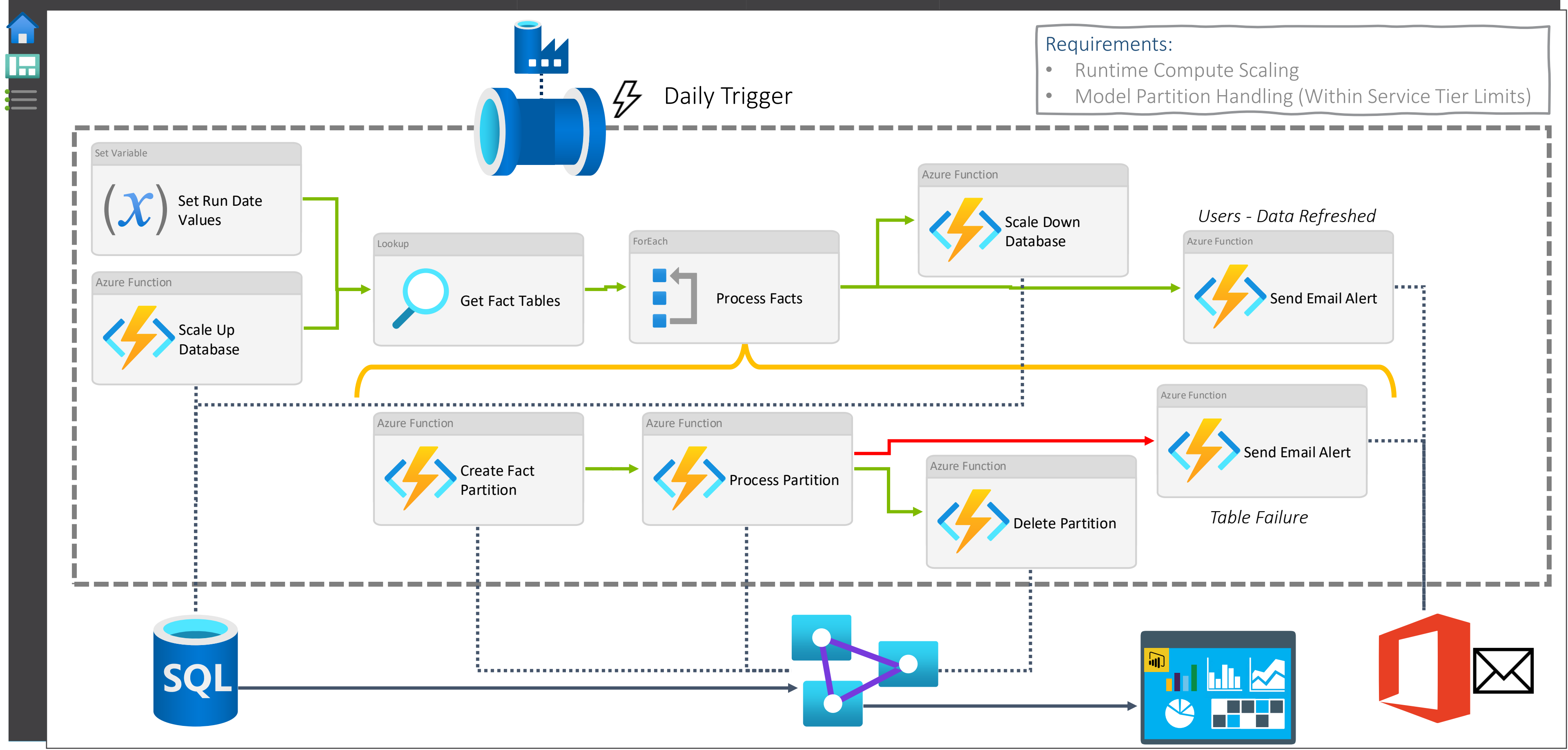
# Azure Functions App



Serverless Scalable Bespoke Executions



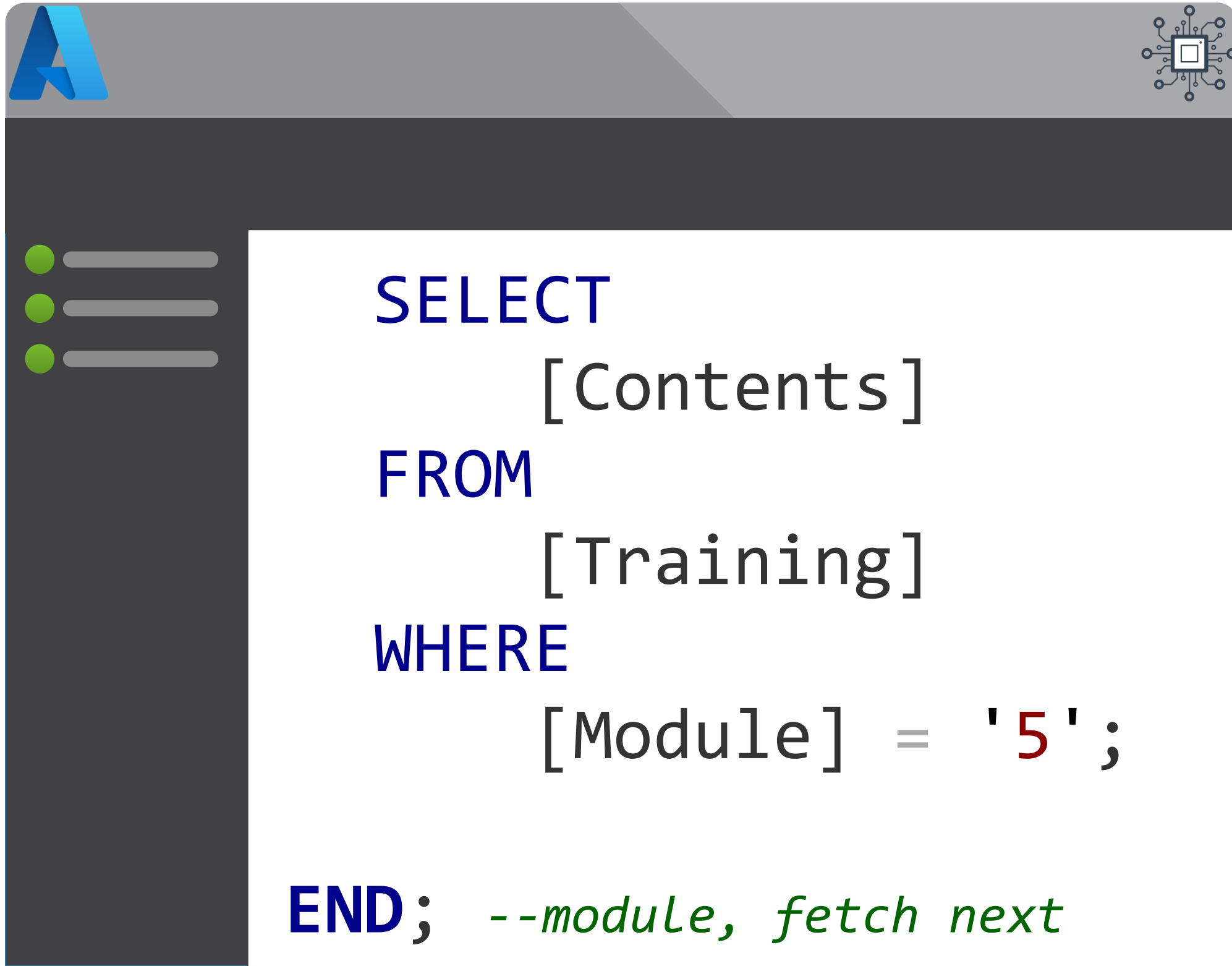






# Module 5

## Pipeline Extensibility



- Azure Batch Service
  - Tasks
  - Compute Pools
  - Scaling
- Pipeline Custom Activities
- Azure Management API
- Azure Functions